

# MLC 62 RS EU

## MEDIALINK® CONTROLLER FOR EUROPEAN JUNCTION BOXES

Simple and Easy-to-use AV System Control

- Customizable backlit buttons
- Mounts in a single size European junction box with 60mm mounting centers
- Volume control with level status indicators
- IR and unidirectional RS-232 for universal display control
- Centralized AV and room control with two relays and one digital input for controlling screens or lighting
- Configuration options: IR learning and easy-to-use Extron configuration software
- Inactivity timer for display shut off
- Front panel security lockout
- Includes six and eight button bezels, adapter plate, and matching cover frame
- Available in RAL9010 white



**Extron® Electronics**  
INTERFACING, SWITCHING AND CONTROL

# Introduction

The **MLC 62 RS EU** MediaLink® Controller is an easy-to-use keypad controller for classrooms and meeting facilities. The controller is designed to mount in a single size European junction box and includes a matching cover frame. The MLC 62 RS EU offers backlit soft touch buttons for a contemporary look and feel while providing control capabilities for common AV functions including display power on/off, input switching, and volume control, as well as other devices in the room.

## Consistent Control in Every Room

The MLC 62 RS EU controller acts as an extended remote control panel providing user-friendly control for a display's power, volume, and input selection. Because the controller offers a central point of control for a display device's key functions, it eliminates the need for a handheld IR remote control. There are no misplaced remotes to search for, no confusing menus to navigate, and no dead batteries to replace. No matter what brand of display is installed in each presentation venue, the MLC 62 RS EU MediaLink Controller provides a consistent control method. Presenters with little or no training can walk into any MediaLink equipped classroom and operate the AV system with minimal effort.

## Universal Display Control

The MLC 62 RS EU includes an IR/serial port and unidirectional RS-232 for universal display control. Extron creates and administers thousands of certified, ready-to-use projector control drivers that enable MediaLink Controllers to communicate with almost any display device. They enable control of standard projector functions such as power, input selection, and volume adjustment.

## Room Control

The MLC 62 RS EU has two relays, which allow it to control room functions, such as raising or lowering a projector screen, and turning lighting on or off. In addition, a digital input allows the MLC 62 RS EU to monitor a switch or sensor on a device such as a door/window contact, motion detector, or heat sensor.

## Front Panel Security Lockout

The MLC 62 RS EU controller features Front Panel Security Lockout. When the lockout mode is engaged, the front panel of the MediaLink Controller becomes inoperable. This feature safeguards the system from unauthorized access. Lockout mode is engaged by holding down specific buttons simultaneously for three seconds. The same procedure is repeated to disable lockout mode.

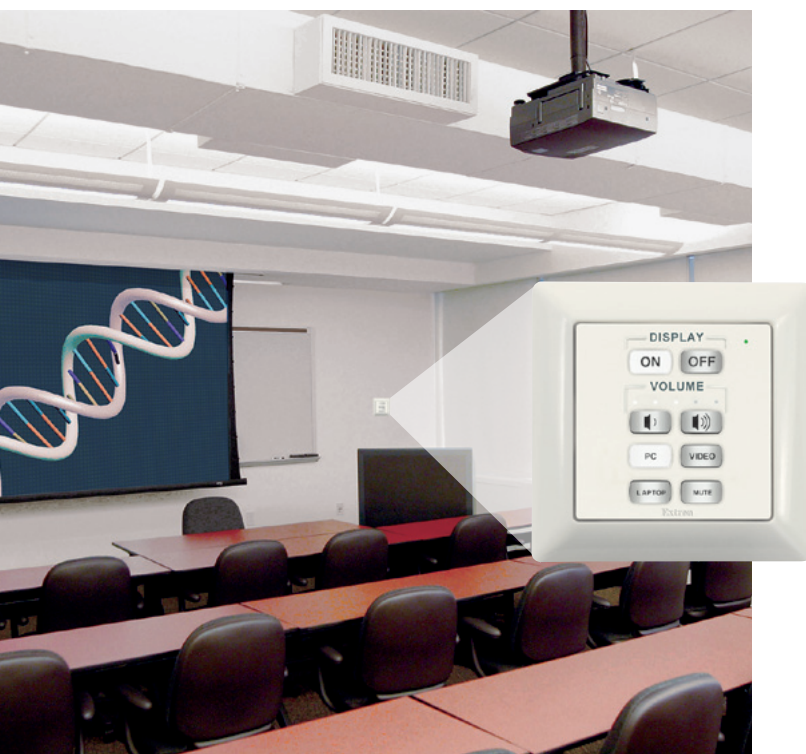
## Customizable Backlit Buttons

The controller's backlit, soft touch buttons are fully configurable in their function and labeling. Standard buttons consist of power on, power off, volume up, volume down, and source selections. These buttons can be configured to send out IR or RS-232 commands to the display using the intuitive setup software provided. This makes it easy to configure the controller to meet the needs of most single-display AV systems. A variety of pre-labeled button options are included.

### Single - function button options



### Dual - function button options



The source buttons offer a choice between a single or dual function setup by simply swapping out the bezel and buttons. The MLC 62 RS EU ships with both six-button and eight-button bezels. The eight-button bezel is ideal for applications that require up to four inputs or functions, while the six-button bezel is best for supporting two inputs or functions on larger buttons.

# Introduction

## Configurable IR/Serial Port

The IR/Serial port of the MLC 62 RS EU provides expanded control capability. This port supports either IR or RS-232, allowing control of a secondary device. With two separate control ports, the MLC 62 RS EU can control both a display and a switcher or source device.

## Inactivity Timer

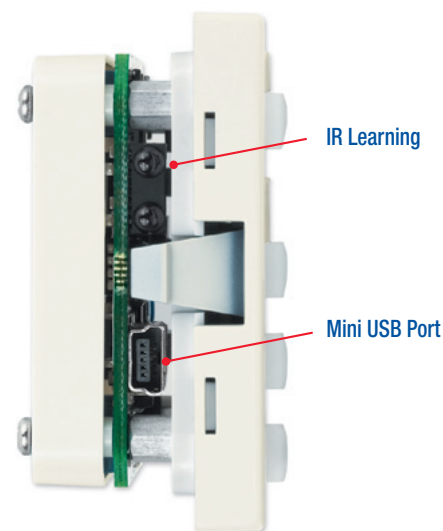
The MLC 62 RS EU controller is equipped with an adjustable timer that automatically shuts down the projector or flat panel display after a set period of inactivity, to conserve energy and extend projector lamp life.

## Macro Capability and Toggle Mode

With the macro capability built into the MLC 62 RS EU, any button can be configured to execute multiple actions. For instance, the touch of a single button could trigger commands to turn on the display, select the display's computer input, and trigger a relay for screen control. Toggle mode provides additional flexibility by allowing two different sets of commands to be executed with alternating presses of a button.

## Free Extron Certified Device Drivers

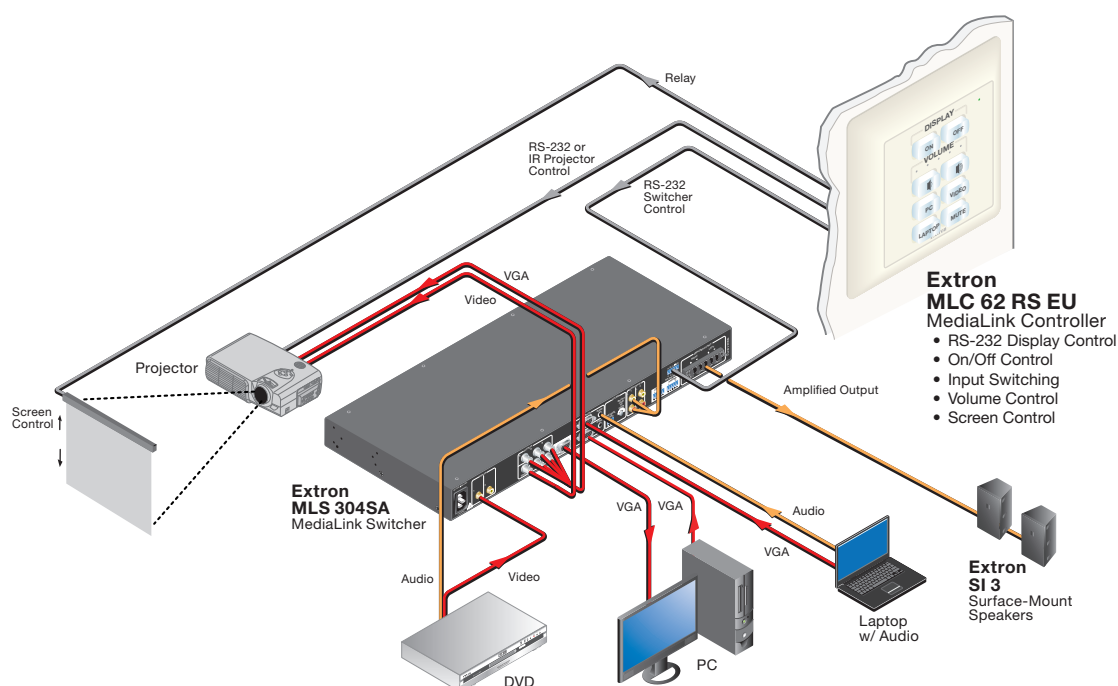
Extron creates and administers a large library of certified, ready-to-use device drivers. Drivers designated as "Extron Certified" were written by Extron and have been reviewed and tested with third party devices. These IR and RS-232 drivers enable the MLC 62 RS EU controller to communicate with a variety of AV devices, and provide control of standard functions such as power, input selection, and volume adjustment. Visit the Extron Web site at [www.extron.com](http://www.extron.com) to download drivers for the latest and most popular devices.



Easy configuration via software or IR Learning

## Easy to Configure

The MLC 62 RS EU controller offers easy setup using configuration software or IR learning. Easy-to-use Extron configuration software provides fast and simple setup via USB, and includes support for the extensive library of Extron certified, ready-to-use IR and RS-232 device drivers. The USB port offers easy configuration connectivity with most PCs and laptops. Configurations may be saved, then restored to other controllers for replicating common room configurations. IR learning allows the controller to learn commands from an existing handheld IR remote.

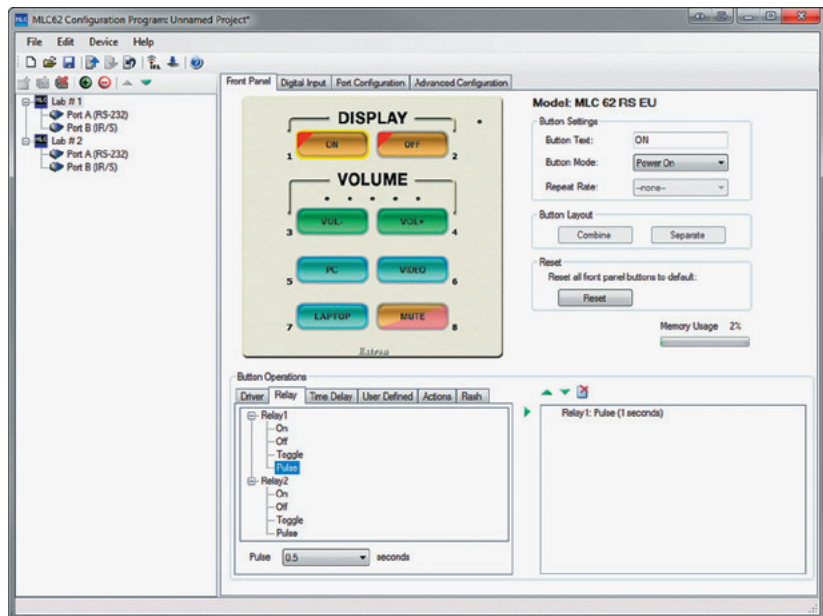


# MLC 62 Configuration Software

## The MLC 62 RS EU is easy to configure... no programming knowledge is required

Extron's free MLC 62 configuration software puts all of the most commonly used system control options at your fingertips. One of the costliest aspects of building an AV control system, in terms of human resources and time, is programming. AV system programming can be a complex task that requires the skills of an experienced programmer.

Configuring MLC 62 RS EU controllers is as simple as selecting choices from intuitive, drop-down menus instead of writing, compiling, and debugging complicated computer source code. Future system changes, such as replacing the display device, are easy to accomplish.



### System Configuration is Easy

With our free MLC 62 configuration software, users can build a complete AV control system.

### System Changes Take Less Time

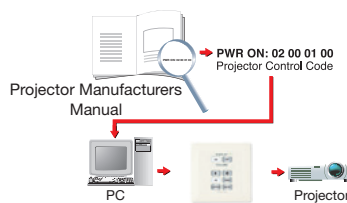
Initial system setup time is reduced, and there's no need to wait for a programmer to make changes.



Extron offers thousands of drivers from many major projector and display manufacturers

### Free Extron Certified Device Drivers

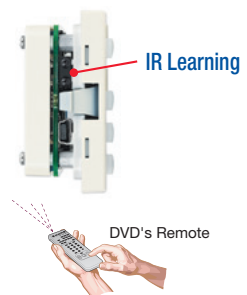
Extron creates and administers thousands of certified, ready-to-use device drivers. These IR and serial RS-232 drivers allow MediaLink Controllers to communicate with a variety of AV devices. They enable control of standard functions such as power, input selection, and volume adjustment. Visit the Extron Web site at [www.extron.com](http://www.extron.com) to download drivers for the latest and most popular devices.



Extron-provided software allows for customized device control

### Custom RS-232 Control

In environments where customizable device control is needed, integrators can easily enter in their own RS-232 commands on the MLC 62 RS EU. RS-232 commands can be assigned to any button using the provided configuration software. The MediaLink Controllers will work with virtually any RS-232 controlled device.



IR Learning from a handheld IR Remote

### IR Learning

Serial RS-232 is the preferred method of control; however, many ultra portable projectors and flat panel displays can only support IR control. The MLC 62 RS EU can learn IR commands from virtually any handheld IR remote control.

# Overview

## Soft Touch Buttons

Buttons are clearly labeled for easy identification. Soft touch buttons provide an intuitive feel and ease-of-use

## Volume Control

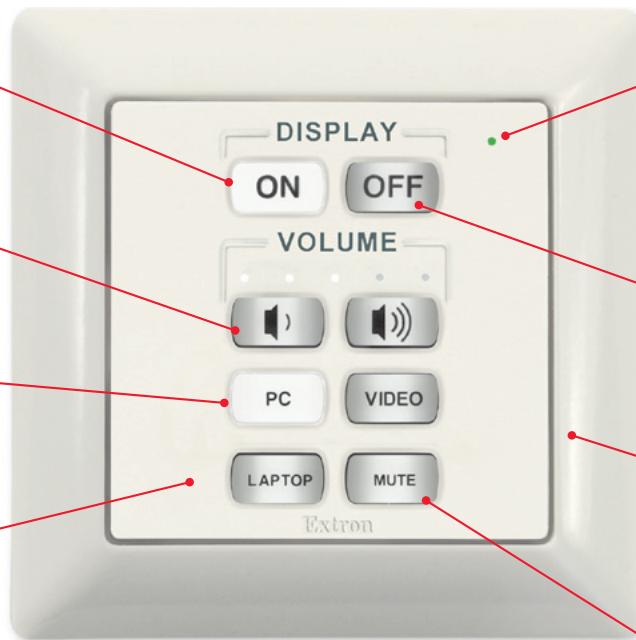
Provides up and down volume control of the display with LED lights that show audio levels

## Backlit Buttons

Illuminated buttons can be customized with supplied replacement buttons for easy labeling. Backlighting is helpful for presenters in low-light environments

## Front Panel Lockout

Safeguards the system from unauthorized access



MLC 62 RS EU - Front

## Visual and Audible Feedback

LED blinks green and audible chirp sounds to indicate power on and confirm button presses

## Compact Size

Single size EU design easily mounts in a wall or lectern

## Display ON/OFF

Clearly labeled buttons make it easy to turn the display on and off, eliminating the need for a handheld IR remote

## Jung-style Frame

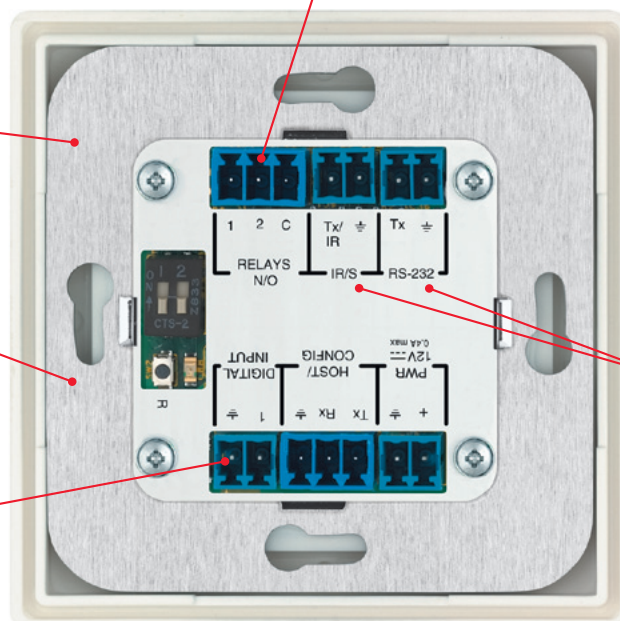
Adds a contemporary look that blends in with any AV environment. RAL9010 white frame and bezel are included

## Multiple Actions

Each button can store multiple IR or RS-232 commands

## Two Relays

Controls room functions such as lowering projector screens and turning lights on/off



MLC 62 RS EU - Back

## Extron Certified Drivers

Thousands of Extron certified ready-to-use device drivers communicate with the display device, enabling control of standard AV functions

## Inactivity Timer for Display Shut-off

Adjustable timer controls automatic shutdown to conserve energy, and extend projector lamp life

## Digital Input

Provides external input for interfacing with a sensor or switch

## RS-232 and IR ports

RS-232 and IR for universal display and MediaLink Switcher control

# Specifications

## CONTROL — HOST PORTS

Serial control port	1 bidirectional RS-232 on a 3.5 mm captive screw connector, 3 pole
Baud rate and protocol	9600 baud, 8 data bits, 1 stop bit, no parity
Serial control pin configuration	Pin 1 = Tx, pin 2 = Rx, pin 3 = GND
USB control ports	
MK and EU models	1 side panel female mini USB B
USB standards	USB 2.0, low speed
IR learning frequencies	30 kHz to 60 kHz
IR learning distance	4" (10 cm) to 14" (36 cm) from the receiver (on front panel for Decora models, side panel for MK and EU models)
Program control	Extron configuration program for Windows® Extron Simple Instruction Set (SIS™)

## CONTROL — SERIAL PORT

Display control port	(1) 3.5 mm captive screw connector, 2 pole for unidirectional RS-232 control (±5 V)
Baud rate and protocol (RS-232)	9600 (default), 19200, 38400, 57600, 115,200 baud; 8 (default) or 7 data bits; 1 stop bit; no parity (default), or even or odd parity

## CONTROL — IR/SERIAL PORT

IR control port	(1) 3.5 mm captive screw connector, 2 pole for IR or IR/Serial* (transmit only) TTL level (0 to 5 V) modulated infrared control from 30 kHz up to 60 kHz, or ±5 V RS-232 control (Transmit only) IR/serial ports are configurable via software, serial communication is the default.
Baud rate and protocol	For RS models: 9600 (default), 19200, 38400, 57600, 115,200 baud; 8 (default) or 7 data bits; 1 stop bit; no parity (default), or even or odd parity

## CONTROL — RELAY

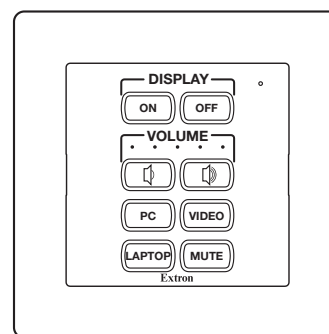
Number/type	2 momentary or latching (configurable via software)
Connector	(1) 3.5 mm captive screw connector, 3 pole
Contact rating	24 V, 1 A

## CONTROL — DIGITAL INPUT MONITORING PORT

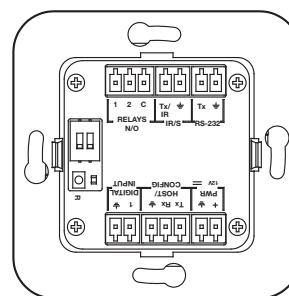
Number/type	1 digital input (configurable)
Connector	(1) 3.5 mm captive screw connector, 2 pole
Digital inputs	
Input voltage range	0-24 VDC
Input impedance	12k ohms
Programmable pullup	2k ohms to +5 VDC
Threshold low to high	>1.5 VDC
Threshold high to low	<1.0 VDC

## GENERAL

External power supply	100 VAC to 240 VAC, 50-60 Hz, external; to 12 VDC, 1 A, regulated
Power input requirements	12 VDC, 0.4 A, max.
Temperature/humidity	Storage: -40 to +158 °F (-40 to +70 °C) / 10% to 90%, noncondensing Operating: +32 to +122 °F (0 to +50 °C) / 10% to 90%, noncondensing
Cooling	Convection, no vents
Mounting	
Rack mount	No



MLC 62 RS EU - Front



MLC 62 RS EU - Back

Furniture or wall mount	
EU models	Mounts in a standard 1 gang EU electrical junction box with 60 mm mounting centers (40 mm depth). An adapter frame is included.
Enclosure type	Plastic
Enclosure dimensions	
MLC 62 RS EU Faceplate	2.2" H x 2.2" W x 0.3" D (1-gang EU, fits a Jung AS 500 wallplate)
Device	(5.5 cm H x 5.5 cm W x 0.7 cm D) 1.9" H x 2.0" W x 0.7" D (4.8 cm H x 5.2 cm W x 1.8 cm D) (Overall rear dimensions, including connectors. Allow at least 1.25" [3.2 cm] depth in the junction box for device and cable clearance.)
Product weight	
MLC 62 RS EU	1.0 lb (0.5 kg)
Shipping weight	3 lbs (2 kg)
Vibration	ISTA 1A in carton (International Safe Transit Association)
Regulatory compliance	
Safety	CE, c-UL, UL
EMI/EMC	CE, C-tick, FCC Class A, ICES, VCCI Class A
Accessibility	Section 508 of the Rehabilitation Act (29 U.S.C. 794d)
MTBF	30,000 hours
Warranty	3 years parts and labor
<b>NOTE:</b> All nominal levels are at ±10%.	
<b>Model</b>	<b>Version Description</b>
MLC 62 RS EU	IR and RS-232 Control - EU Frame
MLC 62 Button Kit	English
MLC 62 Button Kit	French/German
	<b>Part number</b>
	60-1005-35
	70-728-01
	70-728-11

For complete specifications, please go to [www.extron.com](http://www.extron.com)  
Specifications are subject to change without notice.



Extron **USA - West**  
Headquarters  
+800.633.9876  
Inside USA / Canada Only  
+1.714.491.1500  
+1.714.491.1517 FAX

Extron **USA - East**  
+800.633.9876  
Inside USA / Canada Only  
+1.919.863.1794  
+1.919.863.1797 FAX

Extron **Europe**  
+800.3987.6673  
Inside Europe Only  
+31.33.453.4040  
+31.33.453.4050 FAX

Extron **Asia**  
+800.7339.8766  
Inside Asia Only  
+65.6383.4400  
+65.6383.4664 FAX

Extron **Japan**  
+81.3.3511.7655  
+81.3.3511.7656 FAX

Extron **China**  
+400.883.1568  
Inside China Only  
+86.21.3760.1568  
+86.21.3760.1566 FAX

Extron **Dubai**  
+971.4.2991800  
+971.4.2991880 FAX